

**Features :**

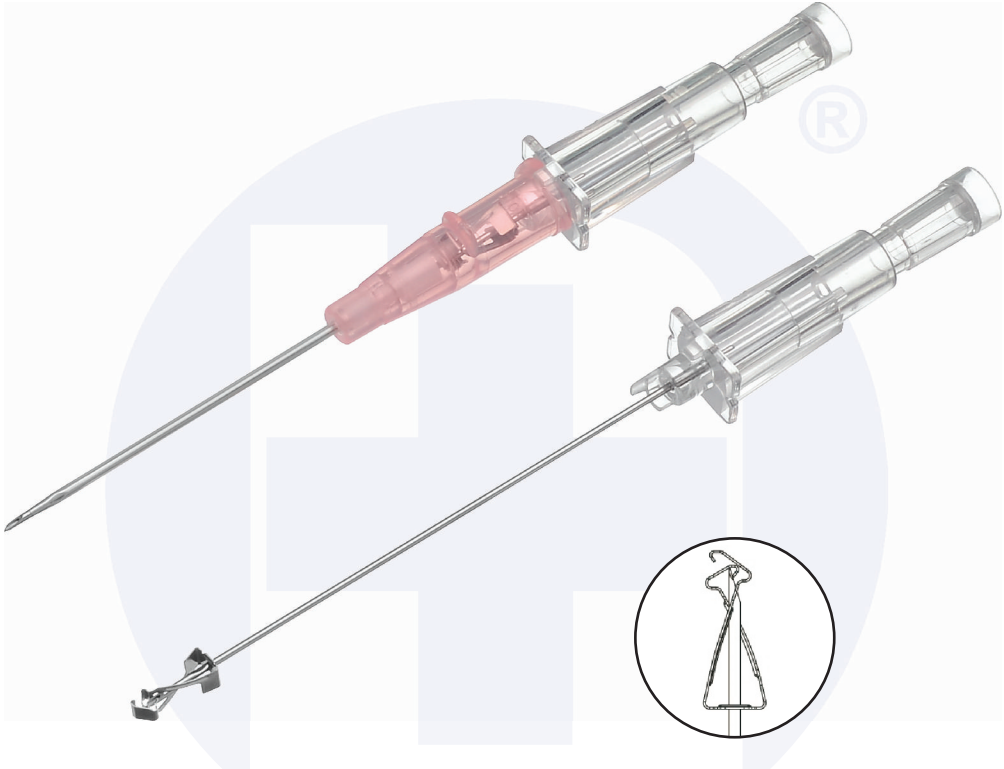
- » Protection against needlestick injuries.
- » Same cannulation technique as in conventional IV Catheter.
- » Self-activating Tip cover technology, no user activation required.
- » Safety mechanism cannot be bypassed.
- » Backcut bevel reduces pain of cannulation.
- » Advanced Catheter Tip design for smoother transition.
- » Transparent Flashback Chamber with Hydrophobic Filter for consistent flashback.
- » Available in PTFE, FEP and PUR Catheter material.

**SPECIFICATIONS**

Gauge	Colour Code	Ext.Dia. mm	Length mm
14G	Orange	2.1	32/45
16G	Grey	1.8	32/45
18G	Green	1.3	32/45
20G	Pink	1.1	25/32
22G	Blue	0.9	19/25
24G	Yellow	0.7	19

**Caution**

- » Do not try to reinsert a partially or completely withdrawn needle.
- » In case venipuncture is not successful, remove the needle first to activate safety mechanism, then withdraw catheter from patient.



**Features :**

- » Protection against needlestick injuries.
- » Same cannulation technique as in conventional IV Catheter.
- » Self-activating Tip cover technology, no user activation required.
- » Safety mechanism cannot be bypassed.
- » Backcut bevel reduces pain of cannulation.
- » Advanced Catheter Tip design for smoother transition.
- » Transparent Flashback Chamber with Hydrophobic Filter for consistent flashback.
- » Available in PTFE, FEP and PUR Catheter material.

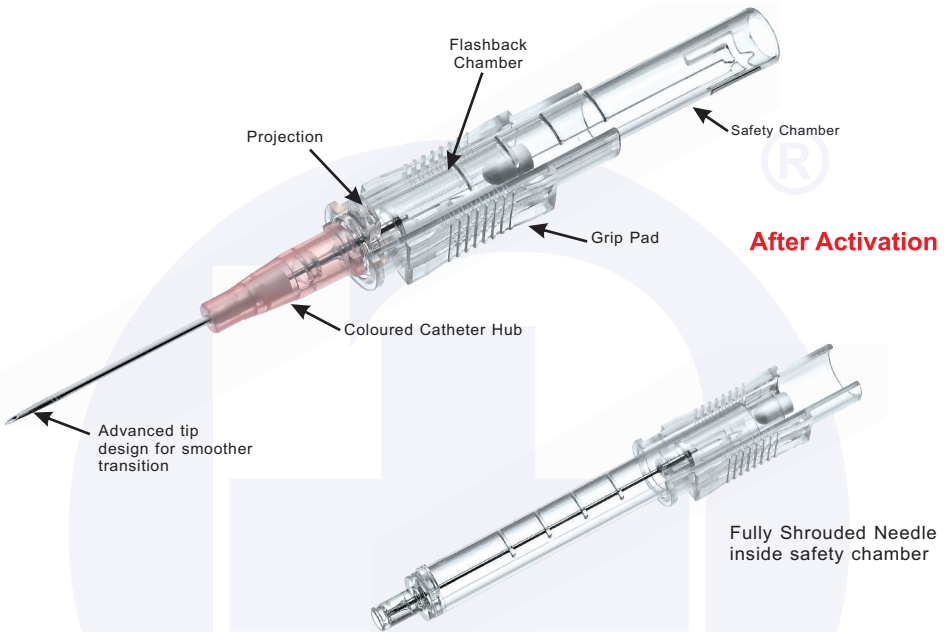
**SPECIFICATIONS**

Gauge	Colour Code	Ext.Dia. mm	Length mm
14G	Orange	2.1	32/45
16G	Grey	1.8	32/45
18G	Green	1.3	32/45
20G	Pink	1.1	25/32
22G	Blue	0.9	19/25
24G	Yellow	0.7	19

**Caution**

- » Do not try to reinsert a partially or completely withdrawn needle.
- » In case venipuncture is not successful, remove the needle first to activate safety mechanism, then withdraw catheter from patient.

# SAFETY IV CANNULA (SLIDER TYPE)



## Features :

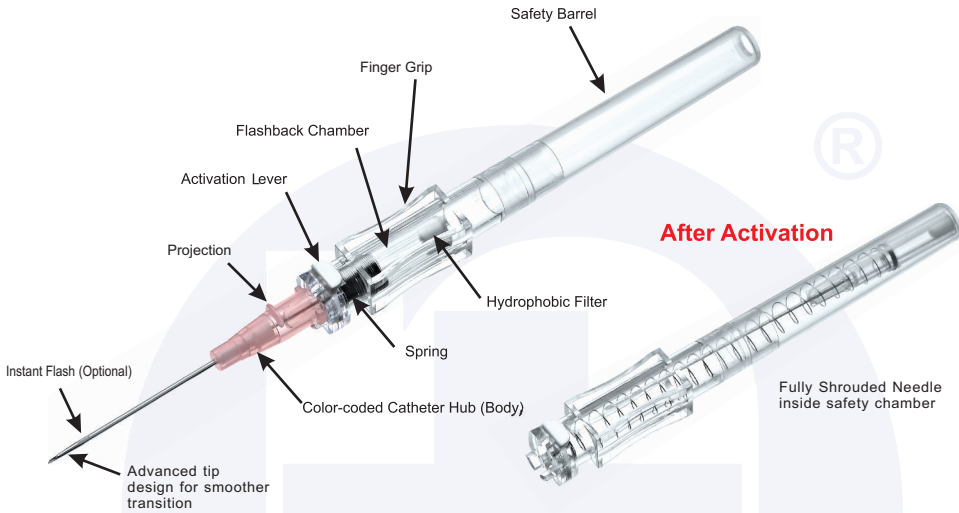
- » Color-coded catheter hub body as per EN ISO – 10555.
- » USP standards Class VI compliance, thin walled Catheters with PTFE, PUR, FEP or ETFE Radio-opaque .
- » Gently tapered catheter tip with Customized Automated Tipping Technology (CATT) for lower penetration forces and optimal trim distance to provide smooth transition from needle to catheter.
- » Siliconised stainless steel needle with ultra-sharp triple facet bevel for smooth & painless venipuncture.
- » The device is available in a variety of lengths and gauges to accommodate procedural and patient needs.
- » The product is designed with transparent flashback chamber for immediate conformation of venipuncture and ensure smooth flow of blood OR any other fluids.
- » Revolutionary designed passive safety design.
- » Fail-safe Needle-Stick Prevention Feature
- » No Extra User Training Required
- » Smooth Needle Withdrawal in Single Action
- » Non-pyrogenic, Sterilized by Ethylene Oxide.

## SPECIFICATIONS

Gauge	Colour Code	Length mm
14G	Orange	32
16G	Grey	32
18G	Green	32
20G	Pink	25/ 32
22G	Blue	25
24G	Yellow	19

[www.neotecmedical.com](http://www.neotecmedical.com)

# SAFETY IV CANNULA (SPRING TYPE)



## Features :

- » Color-coded catheter hub body as per EN ISO – 10555.
- » USP standards Class VI compliance, thin walled Catheters with PTFE, PUR, FEP or ETFE, Radio-opaque.
- » Gently tapered catheter tip with Customized Automated Tipping Technology (CATT) for lower penetration forces and optimal trim distance to provide smooth transition from needle to catheter.
- » Siliconised stainless steel needle with ultra-sharp triple facet bevel for smooth & painless venipuncture.
- » The device is available in a variety of lengths and gauges to accommodate procedural and patient needs.
- » The product is designed with transparent flashback chamber for immediate conformation of venipuncture and ensure smooth flow of blood OR any other fluids.
- » Revolutionary designed safety feature provides complete protection to healthcare workers as well as hospital waste handlers from accidental needle-stick injuries and prevents transmission of blood-borne pathogens from patients.
- » Non-pyrogenic, Sterilized by Ethylene Oxide.

SINGAPORE

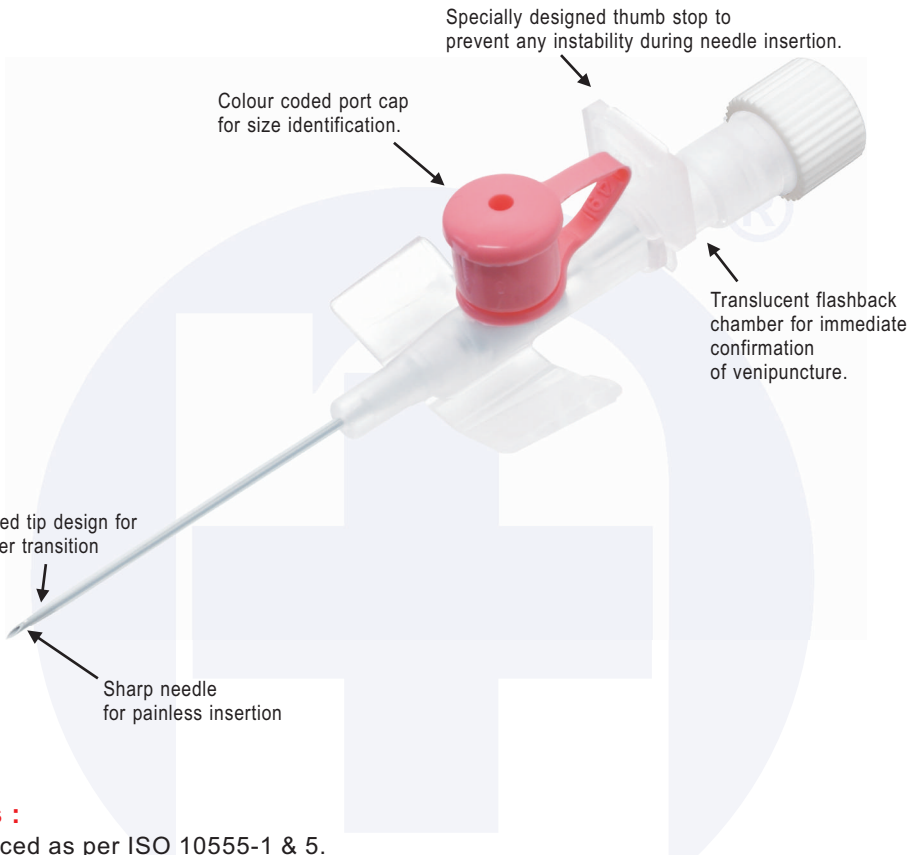
## SPECIFICATIONS

Gauge	Colour Code	Length mm
14G	Orange	45
16G	Grey	45
18G	Green	30/48
20G	Pink	25/30/48
22G	Blue	25
24G	Yellow	19

[www.neotecmedical.com](http://www.neotecmedical.com)

In pursuit of continual improvement, we reserve the right to change the design and specifications of any of our products without prior notice.

# I.V. CANNULA WITH INJECTION VALVE



## Features :

- » Produced as per ISO 10555-1 & 5.
- » Provided with injection site :
  - Which has one way retreating valve to facilitate extra medication without allowing any back flow.
  - To inject medicine by a Syringe without needle thereby reducing the chances of infection and preventing needle stick injuries.
  - The valve is provided with specially designed cap incorporating a recessed plug with a protective skirt to effectively prevent contamination when the valve is not in use.
- » Colour coded valve cap for the size identification.
- » It offers safe and convenient method of atraumatic administration of medicine.
- » Angled and grooved wings offer easy fixation and prevent pistoning and rolling of cannula over the patient's body.
- » Siliconised, Ultra-sharp back-cut needle for painless venipuncture.
- » Kink resistant and biocompatible catheter with smooth surface for easy penetration.
- » Advanced tip design provides smooth transition from needle to catheter.
- » Sterile, disposable and pyrogen free.

## SPECIFICATIONS

Gauge	Colour Code	Ext.Dia. mm	Length mm
14G	Orange	2.1	45
16G	Grey	1.8	45
17G	White	1.5	45
18G	Green	1.3	32/45
20G	Pink	1.1	32
22G	Blue	0.9	25
24G	Yellow	0.7	19
26G	Violet	0.6	19

## Options Available :

- » Radiopaque line or Transparent catheter
- » PTFE, FEP or PUR Catheter
- » Paper or Tyvek Packing

[www.neotecmedical.com](http://www.neotecmedical.com)

## I.V. CANNULA-1 WAY (WITHOUT VALVE, WITHOUT WINGS)



### Features :

- » Produced as per ISO 10555-1 & 5.
- » Useful in high risk cases where no extra opening is permitted for risk of infection.
- » Symmetrical design facilitates cannulation at contoured surfaces.
- » Minimum area of contact with patient's body.
- » Colour coded body for size identification.
- » Transparent hub for easy flashback visualisation.
- » Hydrophobic-Filter allows consistent flashback.
- » Siliconised, Ultra-sharp back-cut needle for painless venipuncture.
- » Kink resistant and biocompatible catheter with smooth surface for easy penetration.
- » Advanced tip design provides smooth transition from needle to catheter.
- » Sterile, disposable and pyrogen free.

### SPECIFICATIONS

Gauge	Colour Code	Ext.Dia. mm	Length mm
14G	Orange	2.1	45
16G	Grey	1.8	45
18G	Green	1.3	32/45
20G	Pink	1.1	32
22G	Blue	0.9	25
24G	Yellow	0.7	19
26G	Violet	0.6	19

### Options Available :

- » Radiopaque line or Transparent catheter
- » PTFE, FEP or PUR Catheter
- » Paper or Tyvek Packing

[www.neotecmedical.com](http://www.neotecmedical.com)

# I.V. CANNULA - 1 WAY (WITHOUT VALVE, WITH SMALL WINGS)



## Features :

- » Produced as per ISO 10555-1 & 5.
- » Small projection on body for identification of needle bevel.
- » Colour Coded body & wings for size identification.
- » Small wings help in keeping it in place and do not interfere even on a contoured surface.
- » Siliconised, ultra-sharp back-cut needle for painless venipuncture.
- » Kink resistant and biocompatible catheter with smooth surface for easy penetration.
- » Advanced tip design provides smooth transition from needle to catheter.
- » Sterile, disposable and pyrogen free.

## SPECIFICATIONS

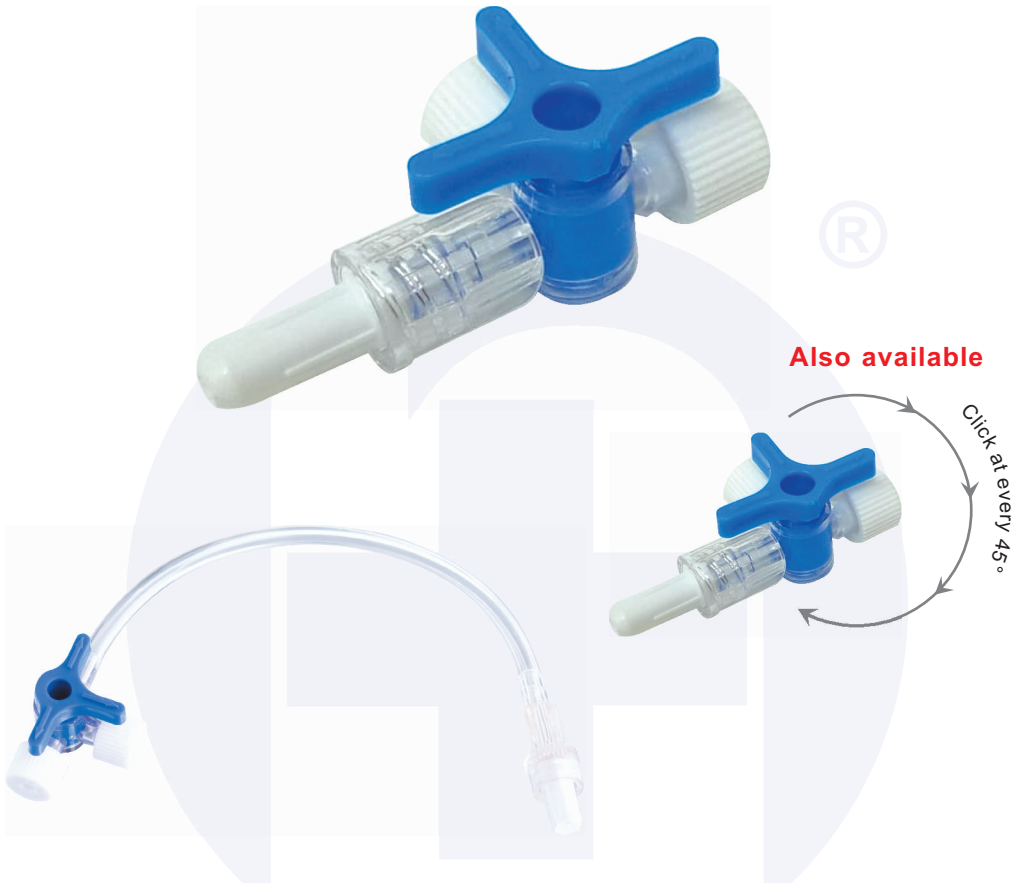
Gauge	Colour Code	Ext.Dia. mm	Length mm
14G	Orange	2.1	45
16G	Grey	1.8	45
18G	Green	1.3	32/45
20G	Pink	1.1	32
22G	Blue	0.9	25
24G	Yellow	0.7	19
26G	Violet	0.6	19

## Options Available :

- » Radiopaque line or Transparent catheter
- » PTFE, FEP or PUR Catheter
- » Paper or Tyvek Packing

[www.neotecmedical.com](http://www.neotecmedical.com)

## 3 WAY STOPCOCK EXTN. TUBE WITH INTEGRATED 3 WAY STOPCOCK



### Features :

#### 3 WAY STOPCOCK

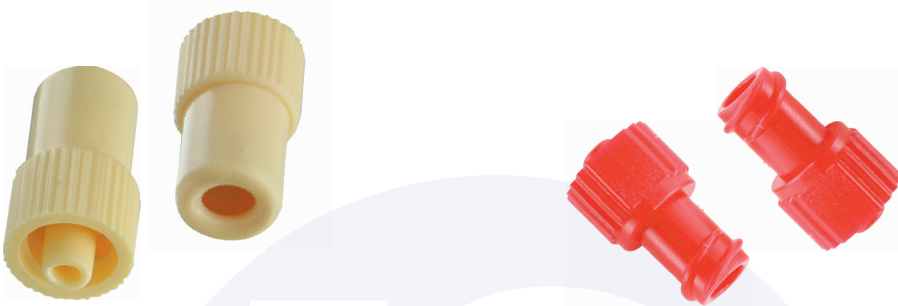
- » Minimal dead-spaces in ports for accurate drug administration.
- » Uniform smooth bore throughout permits maximum infusion flow and prevents turbulence as well as formation of air bubbles.
- » Rotating threaded stopper and threaded female ports facilitate safe and secure connection to luers of other systems.
- » Arrow indication marks on the tap to indicate the direction of flow.
- » Low profile for stable and safe positioning on the patient's body.
- » Transparent base facilitates observation of flow.
- » Internationally accepted 6% luer taper for compatibility with any standard product.
- » Available in lipid resistant.
- » Sterile, disposable and pyrogen free.

#### EXTN. TUBE WITH INTEGRATED 3 WAY STOPCOCK

- » Three way stopcock with integrated extension tubing for less manipulation during intravenous administration of fluids/drugs through an IV Cannula.
- » Available in lengths upto 250 cms.
- » Sterile, disposable and pyrogen free.

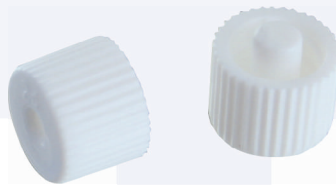
[www.neotecmedical.com](http://www.neotecmedical.com)

In pursuit of continual improvement, we reserve the right to change the design and specifications of any of our products without prior notice.



**INJECTION STOPPER**

**COMBI LUER LOCK**



**LUER LOCK CAP**

## Features :

### INJECTION STOPPER

- » Latex/latex free plug with leakage free fitting for effective flushing of catheter or drawing of blood samples.
- » Minimum Dead space.
- » Universal 6% taper compatible with any standard product.
- » Sterile, disposable and pyrogen free.

### LUER LOCK CAP

- » To block IV Cannulas when not in use.
- » Sterile, disposable and pyrogen free.

### COMBI LUER LOCK

- » Universal 6% taper MALE and FEMALE luers combined in one device
- » Saves time needed to identify male/female stoppers

## EXTENSION TUBE



### Male Luer Lock\*

- » Universal 6% taper to be compatible with standardized devices
  - » Ribs for easy gripping and connection to patient-side IV access
- \*Rotating male luer lock available on request



### Female Luer Lock

- » Universal 6% taper to be compatible with standardized devices
- » Wings for easy gripping and attachment to IV fluid access

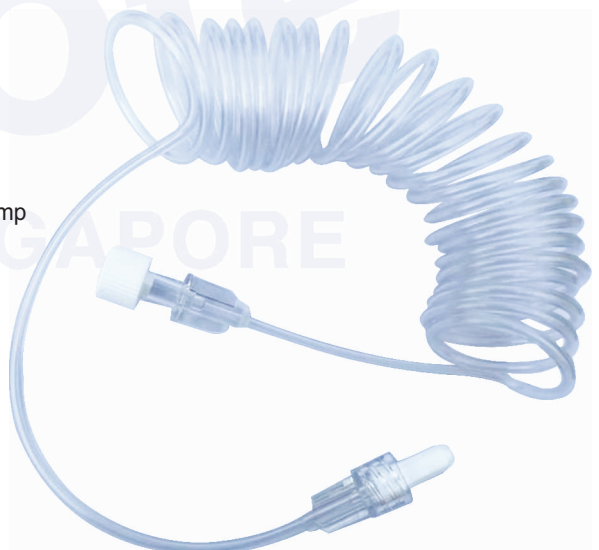
### Tube

- » USP Class VI compliant, soft (<75 shore) highly kink-resistant, medical tubing in standard gauge (3x4.1 mm)
- » DEHP- free PVC
- » Lengths available : 10 cm - 250 cm

## SPIRAL EXTENSION TUBE

### Features :

- » DEHP-Free PVC Tubing
- » Suitable for Syringe Pump/Infusion Pump
- » Male-Female or Male-Male Type
- » Lengths available : 10 cm - 500 cm



[www.neotecmedical.com](http://www.neotecmedical.com)

# FLOW REGULATOR EXTENSION SET



## Dial Flow-regulator

- » Flow rates from 20 to 250ml/hr
- » Double scale for 10% and 40% solution strengths
- » Stable flow rate over time (1-72 hrs)
- » Reliable and accurate flow control (+/- 10%)
- » Ergonomic dial design with ridges for easy gripping and adjustment

## Male Luer Lock\*

- » Universal 6% taper to be compatible with standardized devices
  - » Ribs for easy gripping and connection to patient-side IV access
- \*Rotating male luer lock available on request

## Female Luer Lock

- » Universal 6% taper to be compatible with standardized devices
- » Wings for easy gripping and attachment to IV fluid access

## Tube

- » USP Class VI compliant, soft (<75 shore) highly kink-resistant, medical tubing in standard gauge (3x4.1 mm)
- » DEHP- free PVC

## Y-Site

- » Collared long Y-site provides optimal secondary site for bolus IV injection
- » Self-sealing latex-free septum

[www.neotecmedical.com](http://www.neotecmedical.com)

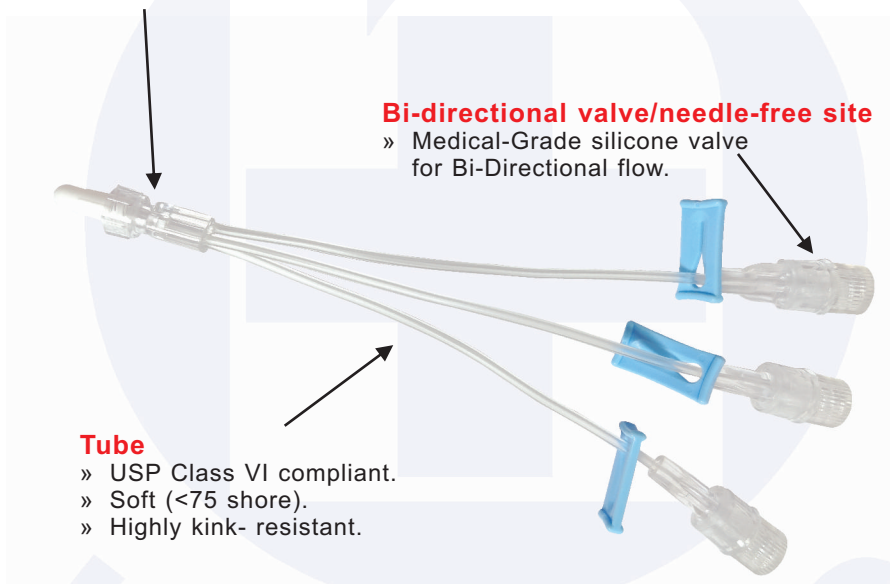
## Features :

- » Compatible with all standard IV sets & IV catheters using luer lock connections.
- » Use of best-quality components conforming to international standards
- » Custom configurations available upon request
  - » Length of tubing ranging from 5cm - 100cm.
  - » Pinch clamp (C-Clamp) or slide clamp.
  - » DEHP - free tubing.

## Triple lumen extension tube

### Male luer lock

- » Universal 6% taper to be compatible with standardized devices.
- » Ribs for easy gripping and connection to patient - side IV access



## Double lumen extension tube

## Single lumen extension tube



**Also available : Injection Stopper with Needle free access Valve Neutral & Negative**

